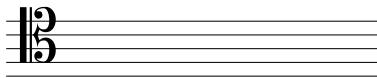
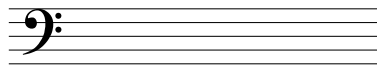


1.3 Pitch Assessment

1. The distance between 2 pitches is called an _____.
2. The enharmonic equivalent of E is _____.
3. The pitch that is a whole step above E is _____.
4. The enharmonic equivalent of A-flat is _____.
5. The enharmonic equivalent of B# is _____.
6. The enharmonic equivalent of D# is _____.
7. The enharmonic equivalent of G-flat is _____.
8. The pitch that is a half step above F is _____.
9. The pitch that is a half step below F is _____.
10. The pitch that is a whole step below F is _____.
11. The pitch that is a half step above F# is _____ or _____.
12. Locate, using a whole note, F3 on the staff below.



13. Locate, using a whole note, B-flat 2 on the staff below.



14. Locate, using a whole note, G4 on the staff below.

